

## Automation Hardware & Software

- PLC (Programmable Logic Controllers)
- HMI (Human Machine Interface)
- SCADA (Supervisory Control And Data Acquisition)

Some  
Application  
where it is  
used.

- **Manufacturing Industry**
  - Extruder factory, silo feeding control system
- **Travel Industry**
  - Escalator operation, monitored safety control system
  - Lift operation
- **Printing Industry**
  - Multi stage screen washing system
- **Food Industry**
  - Filling machine control system
  - Main factory feed water pump duty changeover system
- **Textile Industry**
  - Industrial batch washing machine control system

Some  
application  
where it is  
used (Cont..)

- **Plastics Industry**
  - Extruder factory, silo feeding control system
  - Injection molding control system
- **Agriculture**
  - Glasshouse heating, ventilation & watering system
- **Foundry**
  - Overhead transportation system from casting process to shot blasting machine
- **Leisure**
  - Roller coaster ride and effects control system
- **Hospitals**
  - Coal fired boiler fan change-over system
- **Water and Waste Water**
  - Real time Data Monitoring through SCADA..

Why it is  
used?  
Benefits  
associated  
with a  
particular  
technology

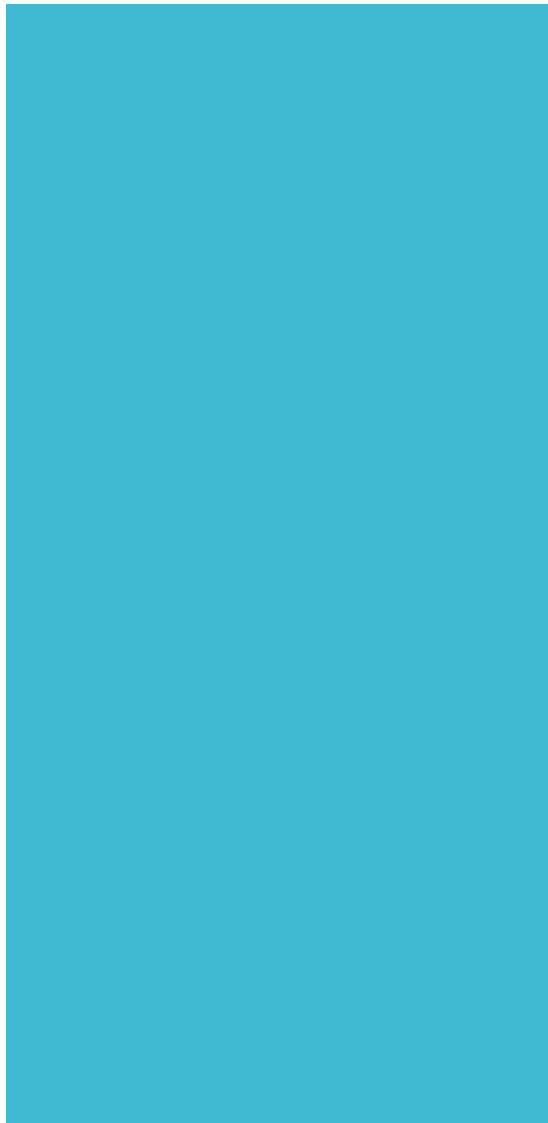
- Cost effective for controlling complex systems.
- Flexible and can be reapplied to control other systems quickly and easily.
- Computational abilities allow more sophisticated control.
- Trouble shooting aids make programming easier and reduce downtime.
- Reliable components make these likely to operate for years before failure.




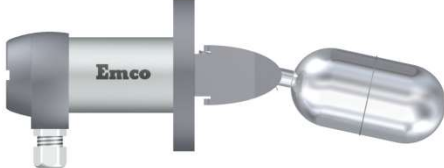

# Our Strengths

- Special Purpose Machine(SPM)
- Bitumen Emulsion Plant
- PMB (Polymer Modified Bitumen)Plant
- MDF Production Line
- Packing Machine
- Filling Machine
- Marker Detection and so on.
- Water and Waste Water

# PLC (Programmable Logic Controllers)





Push Button	 JXB2-BC42
Limit Switch	
Thumbwheel SW	
Level SW	
Flow SW	



Motor



Solenoid



LED Display



Heater Coil

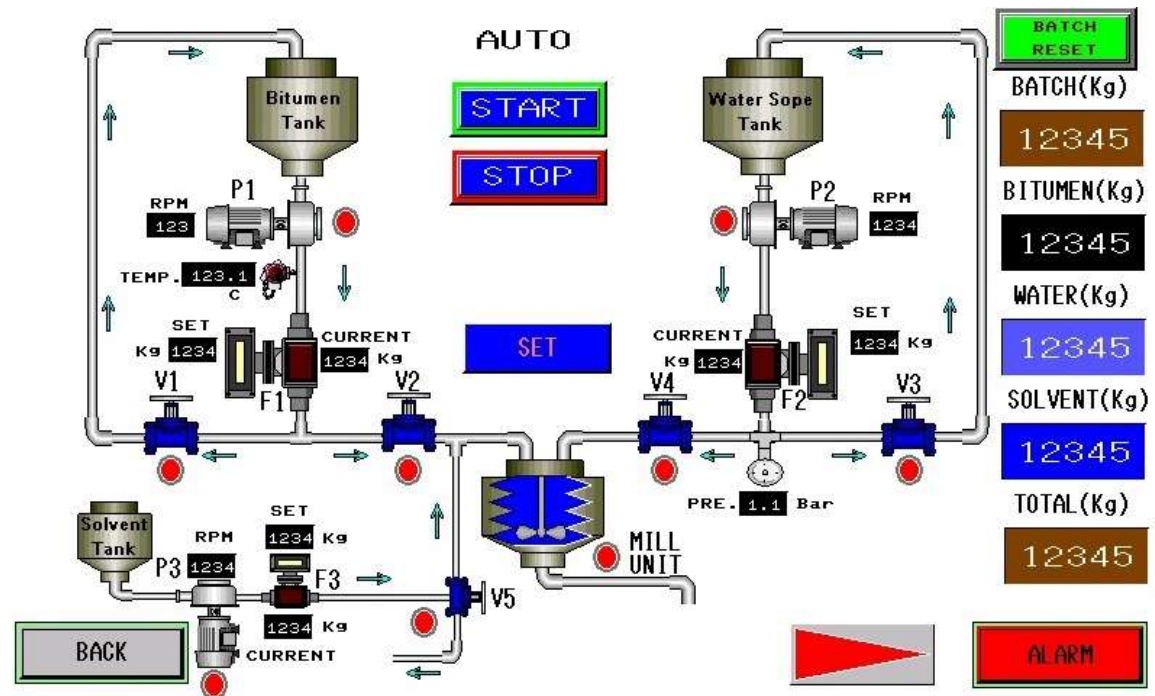


Lamp

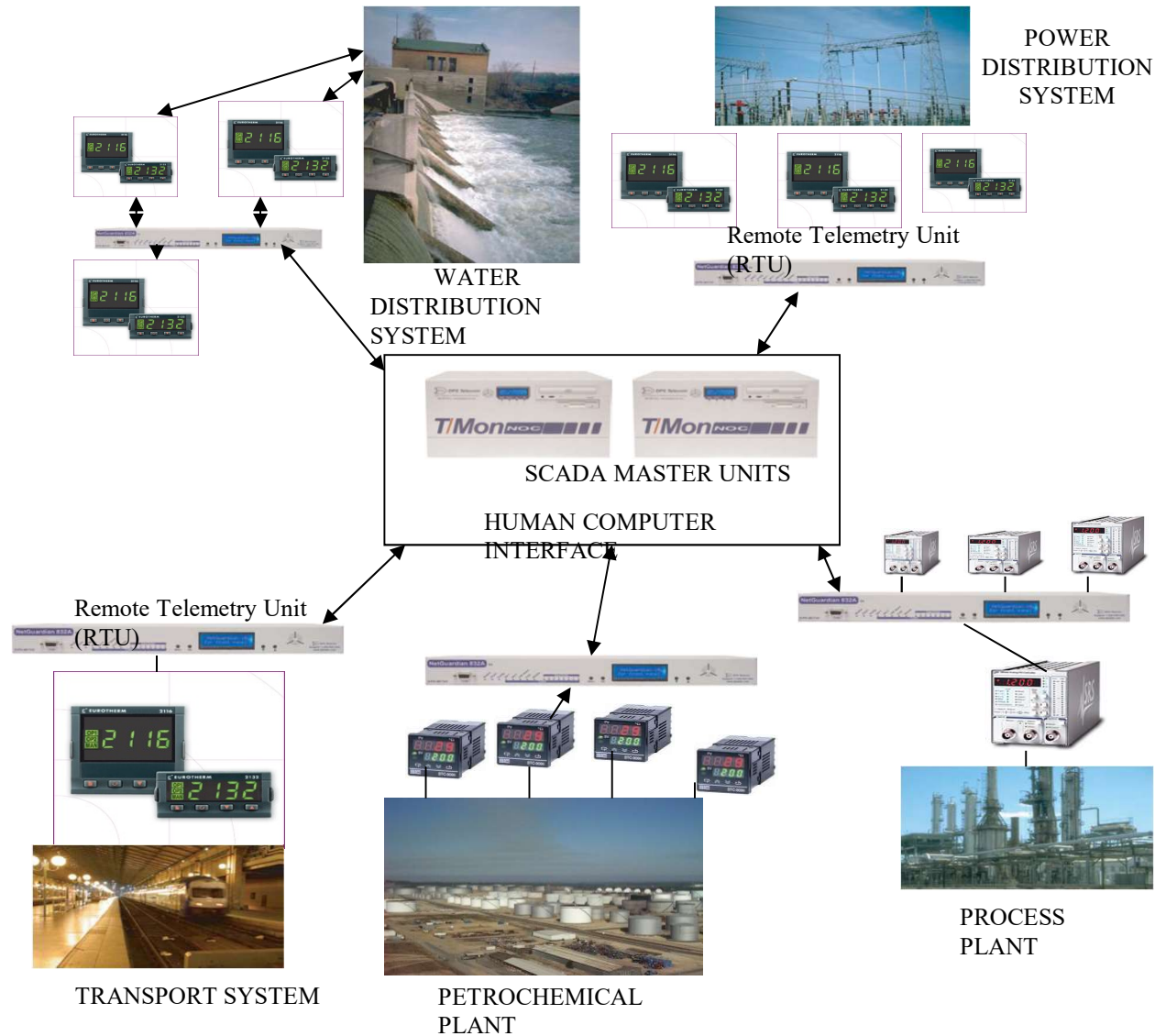




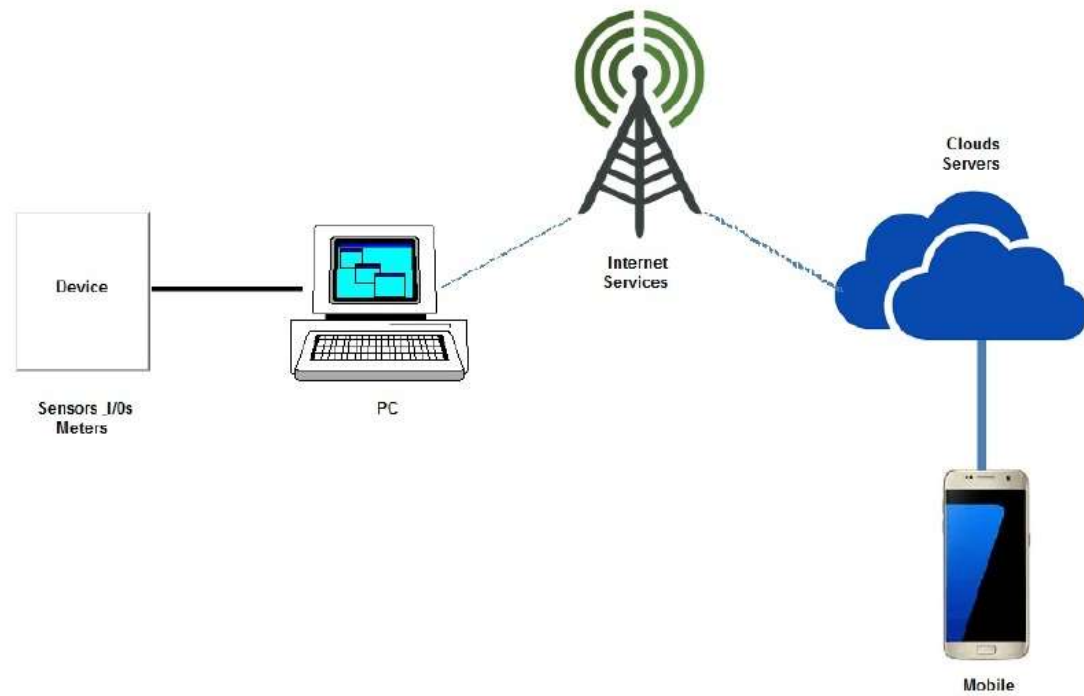
# HMI (Human Machine Interface)



# SCADA (Supervisory Control And Data Acquisition)



# Data Monitoring



# Data Monitoring

